



flowbot ONE

Optimizes your lab processes and workflows
flowbot ONE - the liquid handling robot for a
more flexible and reliable solution.

TABLE OF CONTENTS

- Introducing flowbot ONE 4
- Devices 6
- Applications 7
- Customer story: Danish hospitals 8
- Specifications 10
- The interface for flowbot ONE 12
- Racks for your needs 15
- FAQs 16
- Get in touch 18



We are incredibly happy that Flow Robotics can deliver their robots so quickly.

They are innovative, and they automate just what we need.

Chief Physician
Herlev Hospital



INTRODUCING flowbot ONE

flowbot ONE is built with the purpose of making pipetting easy. With its intuitive user interface everyone can learn to use it in just one hour.

flowbot ONE is a plug and play pipetting solution with high precision and is developed for immediate adjustment.

In fact, with flowbot ONE you can start automating your liquid handling on the day of delivery.

Whenever a procedure changes in your lab there is no need for complicated programming. You are always just a few clicks away.

Thanks to its flexibility and ease of use flowbot ONE will assist you in the lab.



We already see the results of using the robot from the time we save now, so, we want to use it for our other standard tasks as well, which is really valuable.

Ph.D. Molecular Biotechnology
YUMAB

SUPPORTING AN EVEN MORE FLEXIBLE SETUP IN YOUR LAB

flowbot ONE comes with the opportunity to integrate various devices that fit your pipetting needs.

SHAKER/HEATER

The Bioshake 3000-T is a heater and a shaker in one module and can be integrated into your flowbot ONE. It heats from ambient up to 99 °C in a short time



MAGNETIC DECK

A moveable MagneticDeck ideal for your automation. The MagneticDeck can be integrated in your flowbot ONE and can be used with your choice of 96 well-plate.



COLDPLATE

Highly accurate temperature control for tubes, glass vials or microplates that can be integrated with flowbot ONE. Adjustable from -10°C to 99°C.



SEVERAL APPLICATIONS CAN BE APPLIED ON flowbot ONE:

- ✓ PCR & qPCR
- ✓ Reformatting, cherry picking, transferring
- ✓ COVID-19 sample preparation
- ✓ Normalization
- ✓ Sample aliquoting
- ✓ Microplate filling
- ✓ Serial dilution
- ✓ ELISA
- ✓ Agar plate

FLEXIBLE PROGRAM SETUP

Choose the program setup you prefer:

Direct user-interface programming or CSV-file based setup.

DANISH HOSPITALS USE FLOWBOT ONE FOR COVID-19 SAMPLE PREPARATION

Following the COVID-19 outbreak a massive demand for collecting and preparing virus samples put pressure on the bioanalysts working in labs and already performing a lot of manual pipetting tasks.

Following the COVID-19 outbreak a massive demand for collecting and preparing virus samples put pressure on the bioanalysts working in labs and already performing a lot of manual pipetting tasks.

The Capital Region of Denmark noticed the potential of the user-friendly pipetting robot flowbot ONE and today several Danish hospital labs are using flowbot ONE for sample preparation.

In the test lab at Hvidovre Hospital in Denmark, 2 flowbot ONEs are running simultaneously preparing 400 COVID-19 samples per day.

Gorm Lisby, section chief at Hvidovre Hospital explains: "The robots help us in a situation where we are in need of more bioanalysts, and they help us taking care of our employees, so that they don't get overburdened and get strain injuries."

Following the COVID-19 outbreak a massive demand for collecting and preparing virus samples put pressure on the bioanalysts working in labs and already performing a lot of manual pipetting tasks.



On photo: Martin Barfred Friis & Thomas Sundelin, Herlev Hospi-



We are already working in a safe way, but it is brought to the next level when we are now also avoiding contact with the samples during the pipetting, thanks to the robot.

Molecular Biologist
Herlev Hospital

SPECIFICATIONS

PIPETTE CHANNELS

1 channel, 4 channel and 8 channel

PIPETTE TIPS USAGE

Automatic calculation of number of pipette tips needed for each run. If needed new time estimation for new loading is provided.

WEIGHT

105 kg

DIMENSIONS

W100cm x D60cm x H80cm (closed)
W100cm x D60cm x H110cm (open)

PRECISION AND ACCURACY

Complies with the ISO 8655 standard

RUN TIME ESTIMATION

A time estimation for the length of the program is made for each run

CAPACITY

12 positions (SBS format)

SAFETY

Safety door detection and emergency stop button.

STREAMING

Components inside the robot are automatically recognized using computer vision technology and live video recording of each run is streamed to your computer.

SOFTWARE

Runs in your web browser (Chrome) via enclosed wifi connection to the robot's computer

VOLUME RANGES

1-20 μ L or 2-200 μ L or 10-1000 μ L

TIP DETECTION

Pipette modules automatically detect if tips are on or not

LIQUID LEVEL DETECTION

Pipette modules automatically detect the liquid level

CONSUMABLES

Pipette tips: standard pipette tips can be applied

LABWARE

Standard components already predefined in the software. New components can easily be defined by the user

WIFI

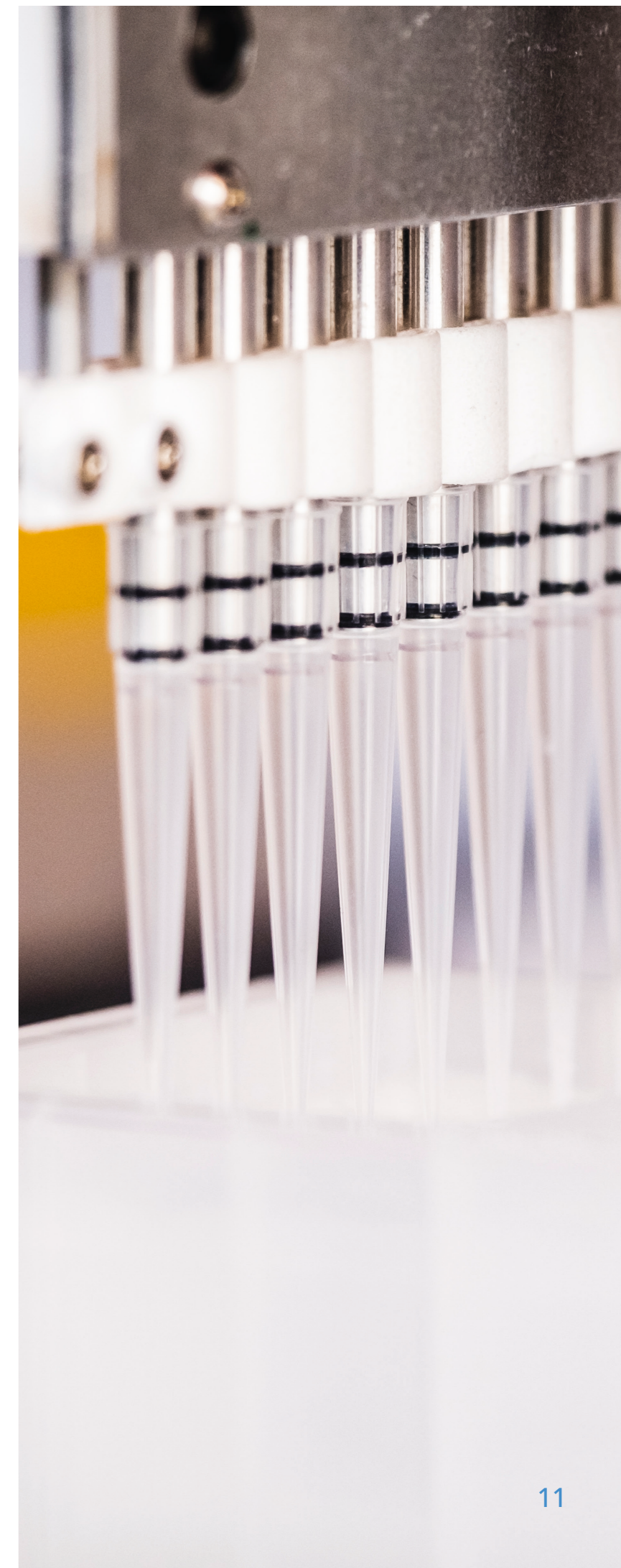
No installation required. Log on directly from your computer to the robot

INTEGRATABLE DEVICES

Heater/cooler/shaker
Magnetic module
More to come...

MORE FEATURES

- Bottom touch
- Optional tip reuse
- Pause (reaction or incubation time)
- Customizable liquid classes
- CSV Import/Export of programs
- Logs of executed programs
- Sharing programs between users



SET UP YOUR PIPETTING PROGRAMS IN MINUTES

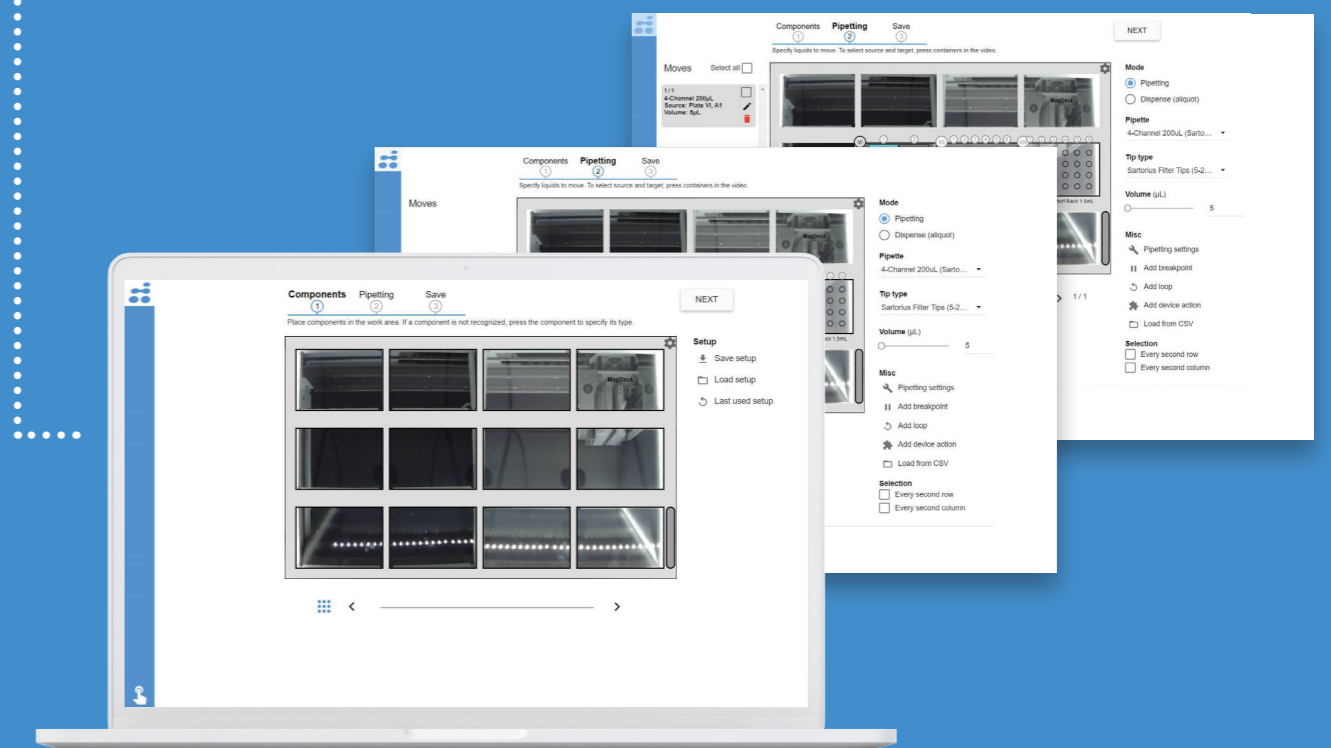
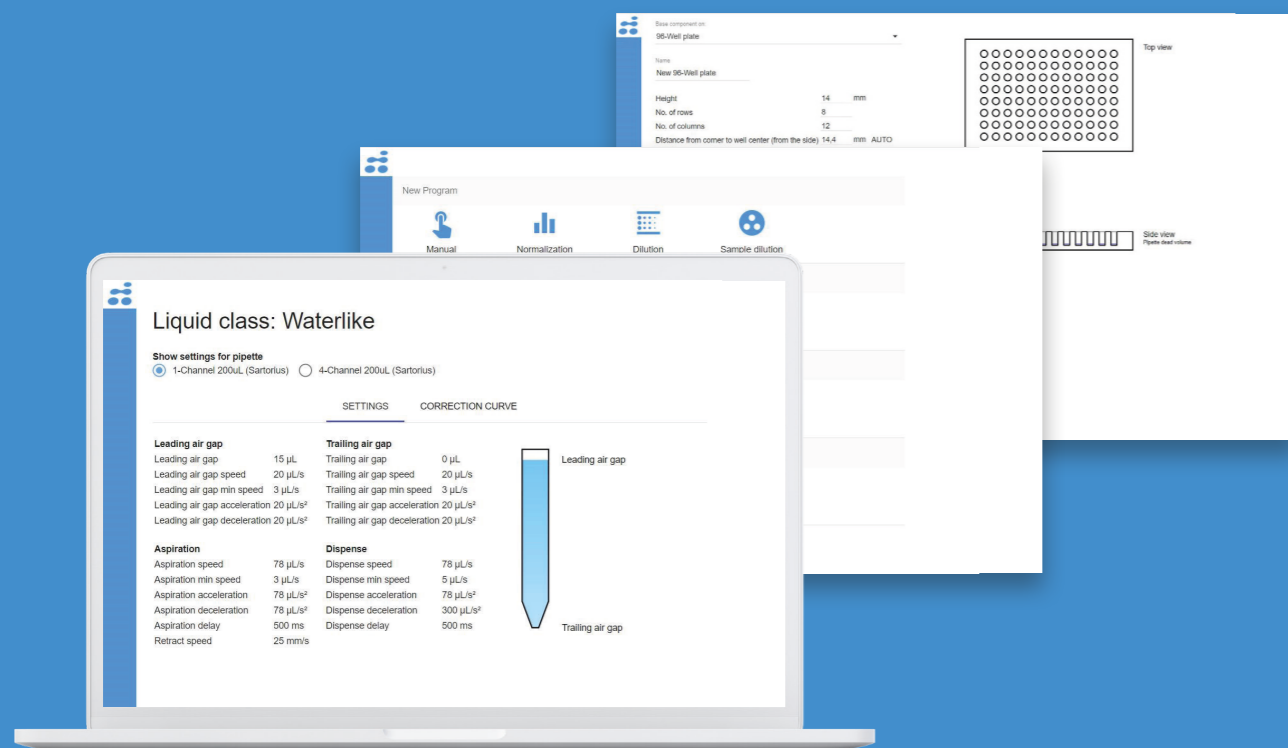
We have designed the user interface to be as intuitive as possible. This means no need for extensive programming or any previous experience with pipetting robots.

All the features needed for a flexible and reliable solution are available and always at hand while setting up programs.

SOME KEY FEATURES:

- ✓ Share programs with other users
- ✓ Log files - both PDF and CSV
- ✓ Create your own liquid classes
- ✓ Time estimate while setting up programs
- ✓ Create your own components
- ✓ Preview programs before run
- ✓ Barcode scanning for data transparency

Learn to use it in 1 hour
- and make programs in minutes!





Now, the sclerosis patients get answers 30 % faster than before. The time from we start the tests until we can conclude on results has been significantly shortened and it is really satisfying to me. We could not have done this without the flowbots.

Medical Laboratory Technologist
Unilabs

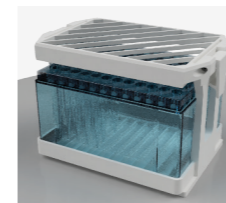
RACKS FOR YOUR NEEDS

We make platforms for your tip boxes that aid a more flexible

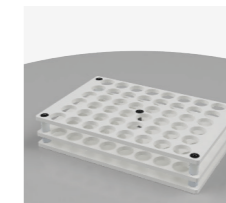
application to the liquid handling applied in your lab.

ADAPTERS FOR TIP BOXES

STANDARD LABWARE



Anti-static grid for tip boxes



Racks for various vials (HPLC etc.)



Various tip box adaptors



Microfuges tubes from 0.5 mL PCR tubes to 5 mL Eppendorf tubes

WE ALSO PRODUCE RACKS CUSTOMIZED FOR YOUR LABWARE.

Each rack is designed to fit into the SBS format inside flowbot ONE.

Upon ordering a robot you can choose which racks you will buy.

TAILORED TO YOUR NEEDS



Special glass flasks



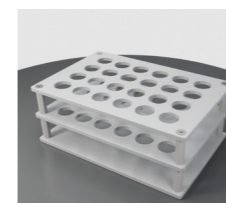
Falcon tubes 15 mL and 5 mL



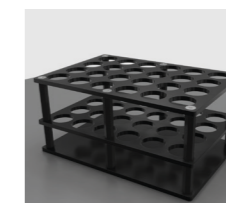
Duran glass flasks



PCR tubes x 24



eSwap

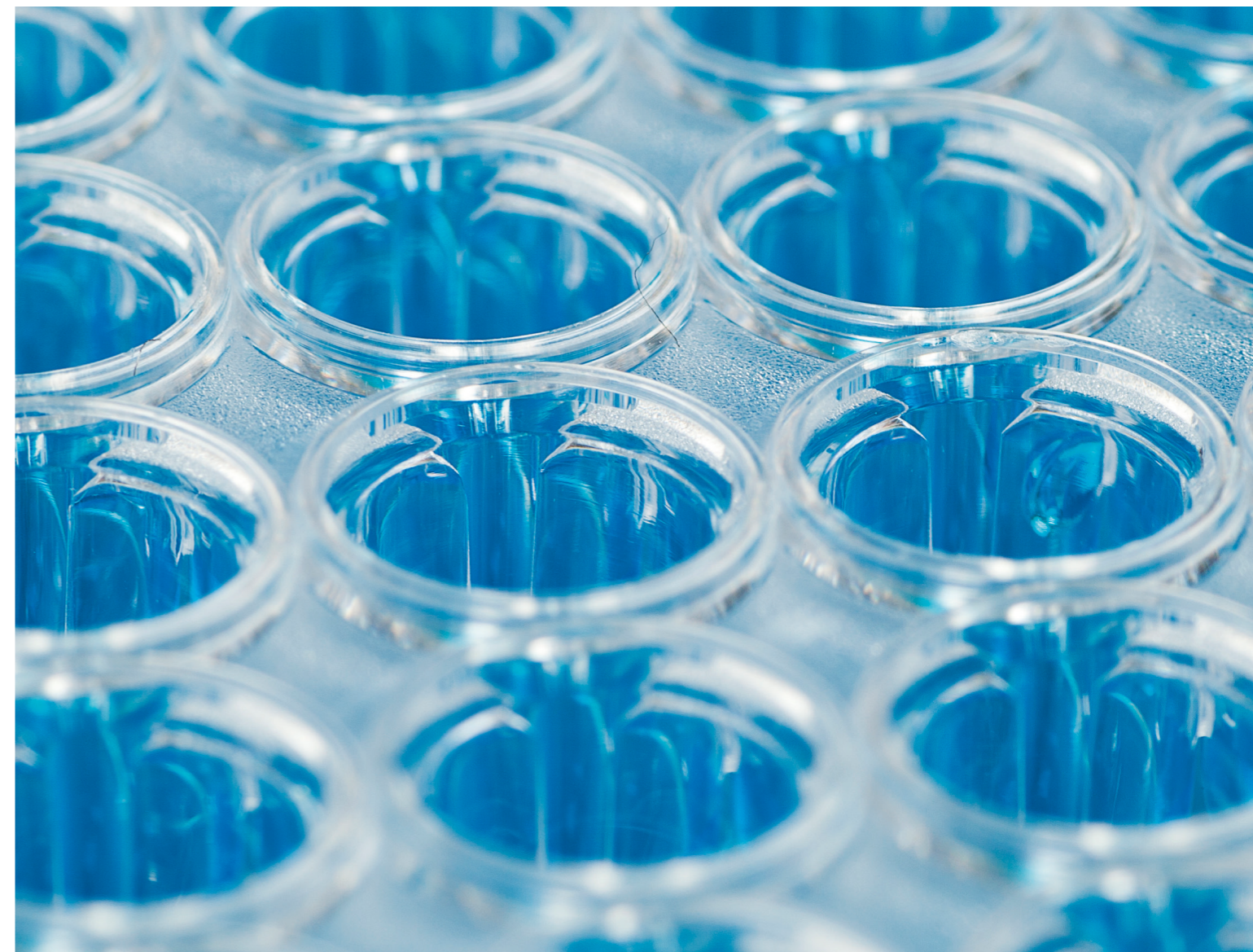


UTM

FAQs

Frequently asked questions about flowbot ONE

- ? WHICH TIPS CAN I USE ON FLOWBOT ONE?**
flowbot ONE has a universal tip cone that allows you to use several different tips that fits your needs (ask us for details)
- ? WHICH PROGRAMS SHOULD I DOWNLOAD TO RUN FLOWBOT ONE?**
No downloads are needed. flowbot ONE is operated as a browser-based application.
- ? DO I NEED INTERNET ACCESS TO RUN FLOWBOT ONE?**
No, you only need to provide a PC with a Chrome browser, ability to connect through WIFI or LAN.
- ? CAN I GET DATA OUT?**
Yes, you can enter input data with a barcode scanner, manually or in a CSV file and retrieve the results in a CSV file after job execution.
- ? WHAT MAINTAINANCE IS REQUIRED?**
We recommend a daily inspection of O-rings on the pipette modules, a half year service of the robot and a yearly volumetric calibration.



Handling 384 well plates with flowbot ONE is just so much easier and pipetting mistakes are even eliminated.

We are really happy with this.

Senior Lab Technician
River Stone Biotech

flowbot ONE

BOOK A DEMO

You can always book a virtual or live demo of flowbot ONE.

Send us an email with your location and we will be in touch.

✉ sales@flow-robotics.com
